



Notification on Activation of Zoning System in Tashichhoeling Gewog

This is to notify the general public that with detection of COVID-19 cases from the community, and considering the need to further assess and contain the disease spread, Zoning System for **7 days** in Tashichhoeling Gewog is, hereby, activated with immediate effect. The following measures shall be implemented during the activation of Zoning System.

1. Movement

- Movement shall be allowed within the Chiwogs.
- Inter-Gewog and Inter-Chiwog movement shall **NOT** be allowed.
- Individuals shall be allowed to carry out farming and livestock activities within their premises without interacting with neighbours.
- **NO** movement shall be allowed from Red Building/Cluster.
- Individuals coming out for essential shopping must follow all the COVID-19 protocols (wearing mask, hand washing, using Druk Trace App., and physical distancing etc.) at all times.
- **NO** movement of vehicles are allowed, unless authorized for essential purposes.
- Medical emergencies shall be attended to and their movement will be facilitated upon verification by concerned health personnel.
- Contact the following numbers/helpline for medical emergencies and other enquiries:

Gewog	Medical Helpline	General Helpline
Tashichhoeling	17554595	1077

2. Office/School/Institution

- Offices shall operate under **WORK FROM HOME** mode as notified by RCSC.
- Schools shall continue to operate under containment mode.

3. Shops/Business

- Only essential shops identified and approved by the Dungkhag Essential Services Team shall be allowed to open from **9:00 AM to 5:00 PM**.
- The identified essential shops must operate under self-containment mode.



4. Essential supplies

- Home delivery of essential supplies to Red Building/Clusters shall be carried out by the Gewog Essential Delivery Team. Requisition for essential supplies shall be placed at **17952968/17617571** from **9:00 AM to 12:00 Noon**.
- Transport of livestock and agriculture products shall be facilitated with e-movement pass.
- Transport of essential items to and from Samtse Throm shall be facilitated with e-movement pass on **Tuesdays, Thursdays and Saturdays** only.

5. Construction Activities

- Construction activities shall be allowed under containment mode with prior approval from the Dungkhag COVID-19 Task Force.
- Transport of fuel shall be facilitated with e-movement pass. The driver transporting the fuel must stay under containment.

6. Public gathering/Social events

- **NO** public gathering (*ritual, rimdros, or other ceremonies*) shall be allowed.
- **NO** games and sporting activities shall be allowed.
- Funeral rites shall be limited to close family circles not exceeding **20 people** with prior approval from the DC19TF.

The general public may also call **1010** for any queries.

INCIDENT COMMANDER
DC19TF

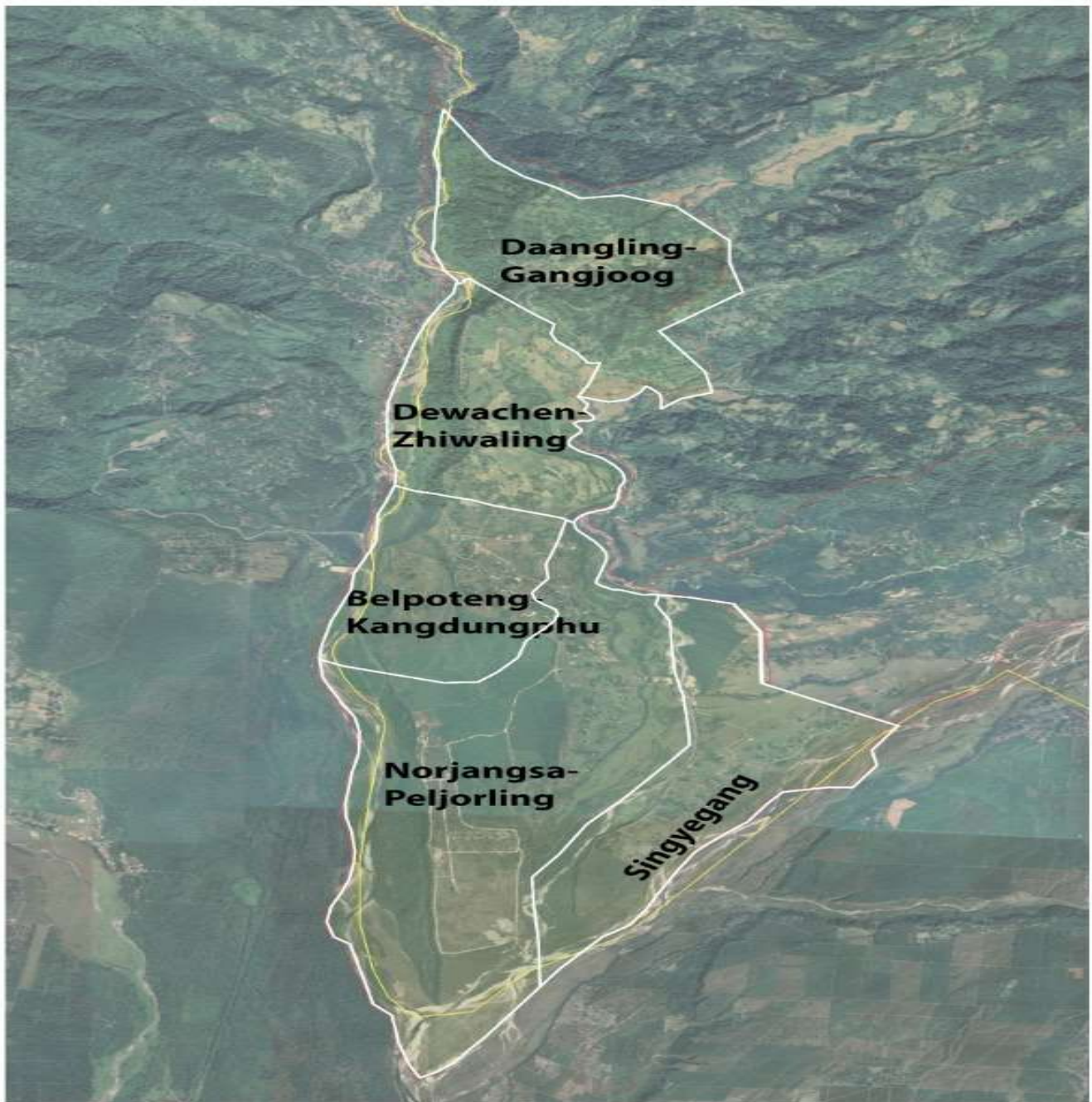


Figure 1. TASHICHOELING GEWOG